

# ELC 4351: Digital Signal Processing

Liang Dong

Electrical and Computer Engineering  
Baylor University

*liang.dong@baylor.edu*

February 12, 2016

# MATLAB Project Topics

- 1 Dual-Tone Multi-Frequency (DTMF) Signal Detection
- 2 Musical Analysis and Synthesis

# Dual-Tone Multi-Frequency (DTMF) Signaling

DTMF tones are the tones that a telephone makes to indicate which button was pressed.

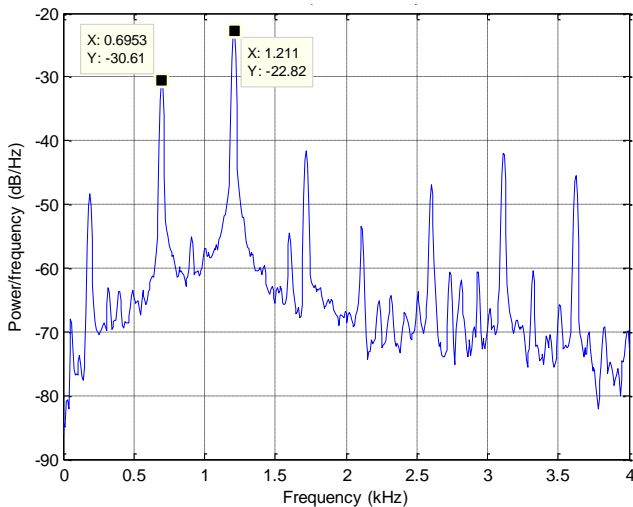
The signal consists of two sinusoids at different frequencies.

	1209 Hz	1336 Hz	1477 Hz	1633 Hz
697 Hz	1	2	3	A
770 Hz	4	5	6	B
852 Hz	7	8	9	C
941 Hz	*	0	#	D

# DTMF Sound Test for “1”

<http://www.dialabc.com/sound/dtmf.html>

# Spectrum of DTMF Tone for "1" (Actual Device)



# Musical Analysis and Synthesis

Frequencies of Music Notes:

<http://www.profdong.com/elc4351/notefreqs.html>

Musical Analysis and Synthesis Matlab Example:

<http://amath.colorado.edu/pub/matlab/music/>